

GENDER-RESPONSIVE BUDGETING: THE BUDGET CYCLE DIAGRAM FOR TRAINERS

About the GRB budget cycle diagram

The following budget cycle diagram is intended for use in training workshops on gender-responsive budgeting (GRB). It should help those developing GRB strategies to think through the actions to take at each stage of the budget process. The diagram shows a typical budget cycle (**inner circle in green**) and the actions that different actors can take to promote GRB at different stages of this cycle:

The **middle circle** (in purple) shows actions that a government should take to ensure the budget is gender responsive at each stage of the process.

The **outer circle** (in orange) shows the actions that civil society organizations can take to promote gender-responsive budgeting.

The **three separate circles** (in grey) list the actions that government, civil society organizations and international NGOs should take throughout the budget cycle, such as training and capacity building.

Note: This diagram is based on a ‘typical’ budget cycle of a country ‘x’, but in reality, countries’ budget cycles can be different. Some countries may work on a three or five-year plan, which may be amended every year. Local or regional government will have different levels of power to raise taxes and decide spending priorities in different countries.

GRB ACTIONS AT DIFFERENT STAGES OF THE BUDGET CYCLE

FIRST INNER CIRCLE

Budget cycle

SECOND CENTRE CIRCLE

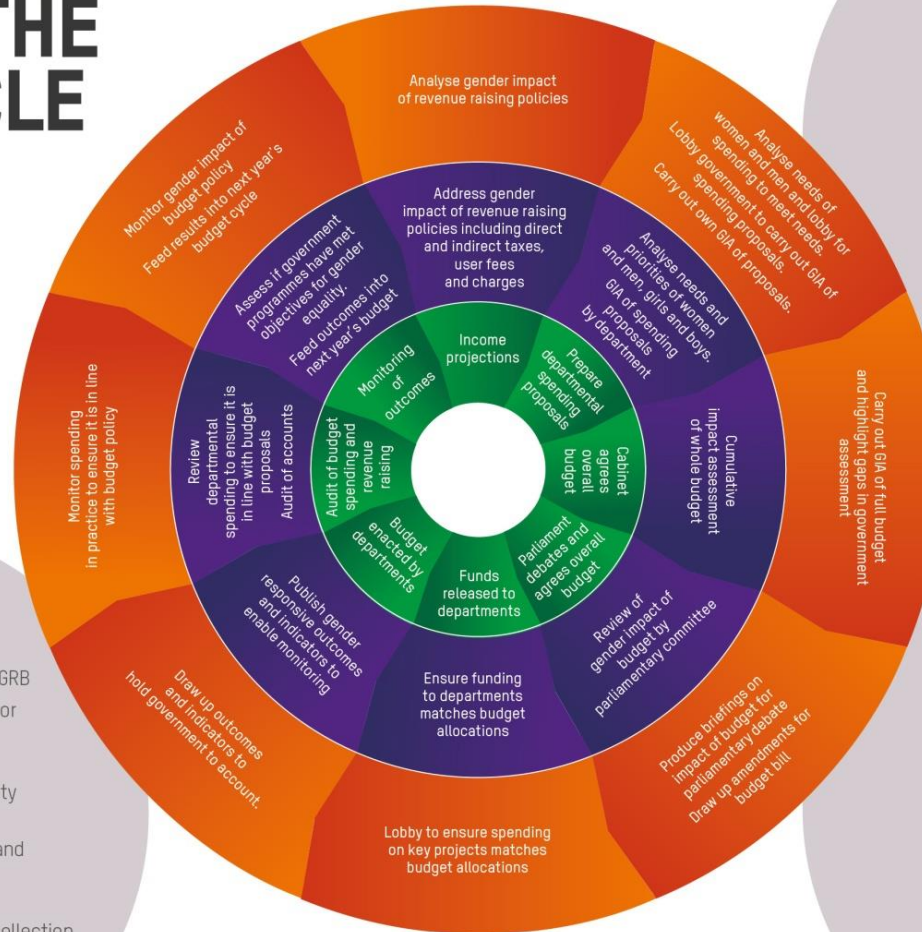
Government Action cycle

THIRD OUTER CIRCLE

Civil Society Action cycle

GIA:

Gender Impact Analysis



Throughout the cycle International NGOs should:

- Share international best practice on GRB
- Work at regional/international level for GRB approach to be adopted by key regional and international bodies
- Build capacity of domestic civil society to engage in GRB projects
- Build capacity of Ministers, officials and parliamentarians to understand and deliver GRB policies
- Provide technical assistance in the collection of gender disaggregated statistics
- Provide financial support for GRB projects

Throughout the cycle Civil society should:

- Demonstrate need for GRB through research
- Lobby Government to implement GRB
- Build capacity of women and smaller civil society organisations to engage with budget, carry out gender analysis of government and hold government to account
- Build the capacity of parliamentarians on GRB
- Build alliances in support of GRB
- Budget enacted by departments

Throughout the cycle Government should:

- Ensure those responsible for budget have capacity to implement GRB
- Collect and publish gender disaggregated statistics
- Collect and publish data on unpaid work
- Build institutional mechanisms and ensure resources are available to support civil society to engage in dialogue with government

How to use the GRB budget cycle diagram

The budget cycle diagram is intended for use in training workshops where participants have some understanding of the concept of gender, GRB, the reasons for adopting a GRB approach and key questions when analysing budgets. The diagram can be used as follows.

- 1) Find out how much participants already know about gender. Identify whether and how best to discuss sexual diversity, gender expression and identity, going beyond 'men' and 'women', as well as the importance of intersectionality.
- 2) Find out how much participants know about GRB. If background knowledge on GRB is low, you can use the PowerPoint presentation produced by the UK Women's Budget Group to introduce the basic concept of GRB. A short Rough Guide to GRB is also available. Resources are downloadable from <http://policy-practice.oxfam.org.uk/publications/rough-guide-to-gender-responsive-budgeting-620429>
- 3) Introduce the budget cycle diagram (French and Spanish versions are also available), enlarged so that participants can read the text in the diagram together.
 - Explain that the **inner circle in green** represents a 'typical' budget cycle and that the budget cycle in their country may be different from this. Talk through the different budget stages, noting how they relate to the context you are in.
 - The **middle circle in purple** shows the actions that government should take in a gender-responsive budget. Show how there are some actions that relate to specific stages of the budget and some (grey circle in the bottom right hand corner) that should be carried out throughout the cycle. Present the content of each stage of the middle circle, explaining what the different types of analysis involve. Refer back to the Rough Guide or PowerPoint presentation for more information.
 - The **outer circle in orange** shows the actions that civil society organizations (CSOs) can take to promote GRB at different stages of the budget cycle, and the grey circle (top right) shows what CSOs can do throughout the cycle. Discuss the different opportunities to hold government to account, explaining that some CSOs may engage in some exercises, while not in others, depending on the circumstances, experiences, expertise, etc. If possible, bring in concrete examples of CSO work from within the country or from other countries.
 - Discuss the actions that international partners can support with, by reference to the grey circle (bottom left).
- 4) Introduce the actual budget system that exists in the country or locality which the training is focusing on. Then, as an exercise, use an empty version of the GRB budget cycle diagram and ask participants to fill it in:
 - Setting out what the actual budget cycle stages are in the country (**inner circle**)
 - Identifying what the government is currently doing in terms of gender responsive budgeting at different stages (**middle circle**)
 - Mapping out the different activities of other relevant actors (**outer circle**)
 - Identifying the different types of interventions (three separate grey circles) that specific organizations and actors are doing or should be doing throughout the year (grey circles).

5) Use the nationally adapted cycle as the basis for discussing key gaps, opportunities for further action and for mapping plans going forward.



GRB training in Vietnam for youth and representatives of disadvantaged groups, including ethnic minorities and people with disabilities Photo: CEPEW, Vietnam

© Oxfam International February 2018

The tool was produced by Mary-Ann Stephenson of the UK Women's Budget Group, an independent not for profit organization that is focused on scrutinizing the UK budget in particular. The tool reflects comments from several Oxfam staff.

E-mail policyandpractice@oxfam.org.uk

For further information on the issues raised in this paper please contact: Clare Coffey (CCoffey@Oxfam.org.uk)